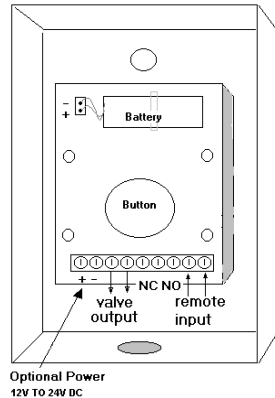


JOB	QTRONICS REPRESENTATIVE	
ENGINEER	ORDER NO.	DATE
CONTRACTOR	SUBMITTED BY	DATE
	APPROVED BY	DATE

LAST UPDATE: January 2002



## Earthquake Maestro™ Battery Operated

### Features:

- Certified and approved worldwide
- Patented Earthquake detection
- Meets or exceeds CSA, UL, ANSI and ASCE standards
- Suitable for outdoor use.
- Low voltage electronic system
- Battery powered. (battery included with system)
- 5-year battery life using Qtronics Approved battery
- Input for external DC power supply
- 2 year full replacement warranty
- Design suits residential or commercial needs:
  - Interacts with gas shut-off valve
  - Normally closed & normally open Dry-contact output for security monitoring
  - Input for remote shut-off
- Easy installation
- 1" or 2" valve available

### Description:

The QECBP8203D is an easy to install earthquake safety system. It includes a 3.6v lithium battery which will provide a minimum of 5yrs of service under normal operating conditions.

When the internal earthquake sensor detects an earthquake, the valve will close and the dry contacts will activate for 2 seconds.

The QECBP8203D also has an input which can accept a 12V DC to 24V DC external power supply. If an external power supply is used, the battery will remain dormant until the supply is removed or the power fails, at which point it will take over. The battery can remain dormant for up to 10 yrs and still retain enough energy to detect an earthquake and close the valve.

Another input is provided for remote shutoff. Connecting a normally open switch or contact to this input will allow for remote closing of the valve.

*In an emergency, break the glass window on the front of the unit then press and hold the red button to close the valve and shut off the gas supply.*

### Connectivity:

The valve is connected to the control unit via 16 AWG exterior-rated cable. Any cable extensions must be connected using approved connection devices for exterior application. The maximum cable length is 60 ft. (20m).

### SCHEDULE

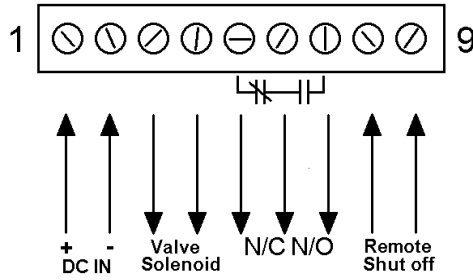
PART NUMBER	INFORMATION	QUANTITY
QECBP8203D*		
QEKBP8000D**		

\* controller only

\*\* kit includes QECBP8203 controller and QGCNN2501 1" gas valve with solenoid.



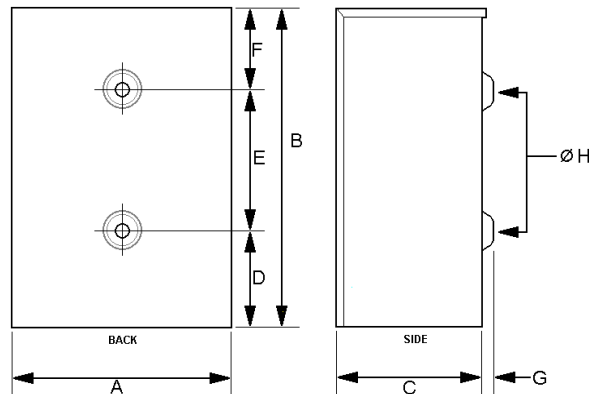
## Terminal Block Connections



## Specifications:

- Power: 3.6V Lithium battery
- Current Consumption: 10 $\mu$ A idle
- Battery Life : 5 years (10 year shelf life)
- Dry Contact Rating: 120V AC 0.5A
- 60V DC 0.3A
- 30V DC 1.0A
- Operating Temperature Range: -5°C (+23°F) to +40°C (+104°F)
- Inputs: 1 2-position, screw-type terminal for testing and remote/emergency shutoff
- 1 2-position, screw-type terminal for 12V~24V DC power supply
- Outputs: 1 2-position, screw-type terminal for valve solenoid output
- 1 3-position, screw-type terminal for dry contact output (NC, common, NO)
- Solenoid Cable: 20m (60ft) max. 16 AWG exterior rated.

## Dimensions



MODEL NUMBER	DIMENSION (INCHES)								APPROX. SHIPPING WT. Lbs. (Kg)
	A	B	C	D	E	F	G	H	
QECBP8203D	4 $\frac{1}{4}$	7	2 $\frac{1}{2}$	7/8	5 3/8	3/4	1/8	3/16	2.3 (1)

All dimensions are approximate and subject to change without notice.

\*Dimensions are for the control unit only.

Approval/Certification CSA, ANSI, ASCE, California State Architect, City of Los Angeles, TSEK